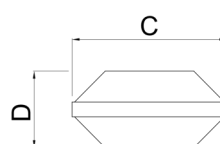
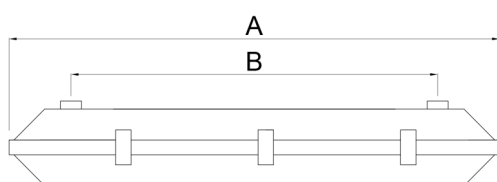


WATEX



APLICACIONES INDICADAS / SUITABLE APPLICATIONS / APPLICATIONS APPROPRIÉES



IT - DE



IP66

IK07



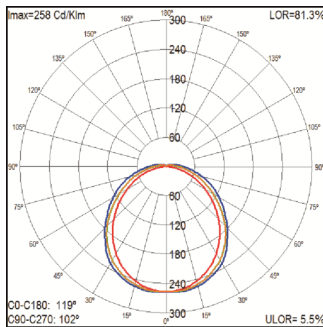
2014/34/EU



II 3GD
Ex nR IIC T5 Gc
Ex tc IIC T100°C Dc



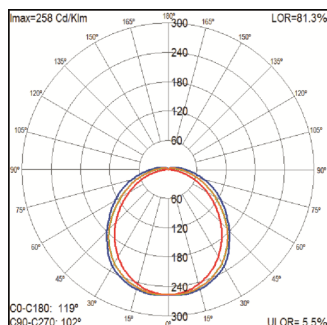
1 MÓDULO LED / 1 LED MODULE / 1 MODULE LED



Ref.	Tamaño Size Dimension	Potencia Power Puissance	Emisión bruta Gross output Flux de la source	Emisión Neta Net output Flux sortant	Tª color Tª colour Tª couleur	A	B	C	D
		(W)	(Lm)	(Lm)	(°K)				
EW113	600	13	1.490	1.210	3.000	664	260	100	110
EW114	600	13	1.550	1.259	4.000	664	260	100	110
EW123	600	16	2.560	2.019	3.000	664	260	100	110
EW124	600	16	2.670	2.168	4.000	664	260	100	110
EW213	1.200	24	2.980	2.420	3.000	1.274	870	100	110
EW214	1.200	24	3.200	2.598	4.000	1.274	870	100	110
EW223	1.200	32	5.120	4.157	3.000	1.274	870	100	110
EW224	1.200	32	5.340	4.336	4.000	1.274	870	100	110
EW313	1.500	29	3.720	3.021	3.000	1.575	650	100	110
EW314	1.500	29	4.000	3.248	4.000	1.575	650	100	110
EW323	1.500	40	6.310	5.124	3.000	1.575	650	100	110
EW324	1.500	40	6.700	5.440	4.000	1.575	650	100	110

WATEX

2 MÓDULOS LED / 2 LED MODULES / 2 MODULES LED

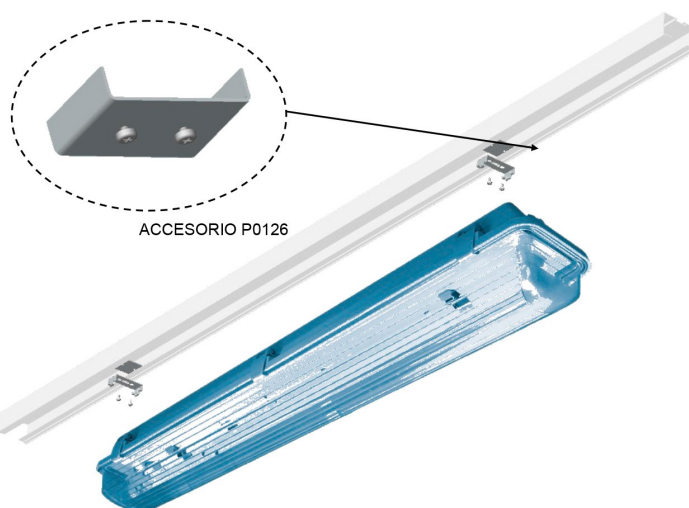


Ref.	Tamaño Size Dimension	Potencia Power Puissance	Emisión bruta	Emisión Neta	Tª color	A	B	C	D
			Gross output Flux de la source	Net output Flux sortant	Tª colour Tª couleur				
		(W)	(Lm)	(Lm)	(°K)	(mm)	(mm)	(mm)	(mm)
EY113	600	24	2.980	2.420	3.000	664	260	160	110
EY114	600	24	3.200	2.598	4.000	664	260	160	110
EY123	600	32	5.120	4.157	3.000	664	260	160	110
EY124	600	32	5.340	4.336	4.000	664	260	160	110
EY213	1.200	48	5.960	4.840	3.000	1.274	870	160	110
EY214	1.200	48	6.400	5.197	4.000	1.274	870	160	110
EY223	1.200	64	10.240	8.315	3.000	1.274	870	160	110
EY224	1.200	64	10.680	8.672	4.000	1.274	870	160	110
EY313	1.500	58	7.440	6.041	3.000	1.575	650	160	110
EY314	1.500	58	8.000	6.496	4.000	1.575	650	160	110
EY323	1.500	80	12.620	10.247	3.000	1.575	650	160	110
EY324	1.500	80	13.400	10.881	4.000	1.575	650	160	110

ACCESORIOS WATEX / WATEX ACCESSORIES / ACCESSOIRES WATEX

1-10
DALI

EMERGENCY
1h/3h





IP66

IK07



2014/34/EU



II 3GD
Ex nR IIC T5 Gc
Ex tc IIIC T100°C Dc

