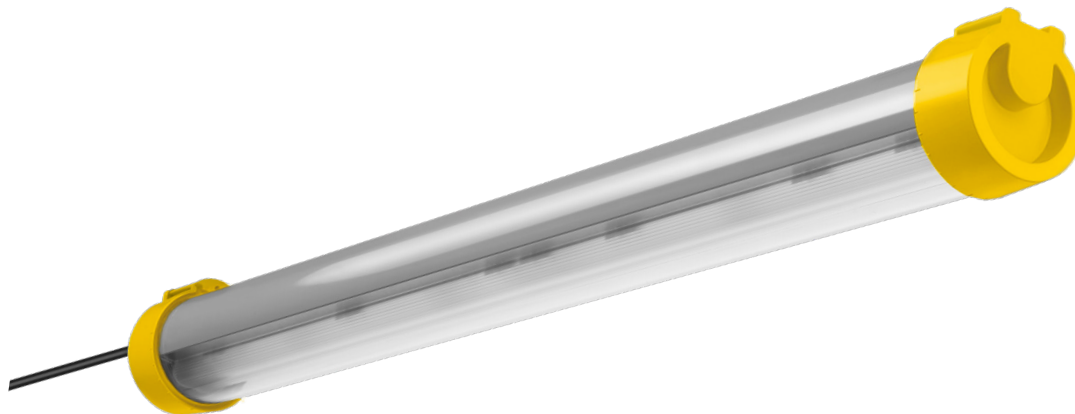


STRONGEX | 1200

Extreme robustness and resistance against impacts and chemical agents

Zone 2, 21
Zone 2, 22



Benefits

- High performance LED module and driver, with extreme resistance to high temperatures up to 55°C.
- Specific gas tight potting to avoid the ingress and condensation of gases.
- Resistant to acids, sulphur vapours and salty environments.
- Suitable for outdoor.

Characteristics

CG: IP 68 PNCX: IP 66/69K IK 10 Frequency 0-50/60Hz Rated voltage 220-240V NON-SELV

Mechanical characteristics

Profile	High impact resistant PMMA
End caps	PA66 + fibreglass
Gasket	Polyurethane
Gear tray	White lacquered steel plate
Cable entry	ATEX cable gland, or ATEX connector
Fixing accessory	316L stainless steel fixing brackets
Chemical agents resistance	See website

Electrical characteristics

Connection	1m external cable, or ATEX quick connector
THD	< 10% full load
Flicker factor	< 1%
Power factor	> 0.95 full load

Functional characteristics

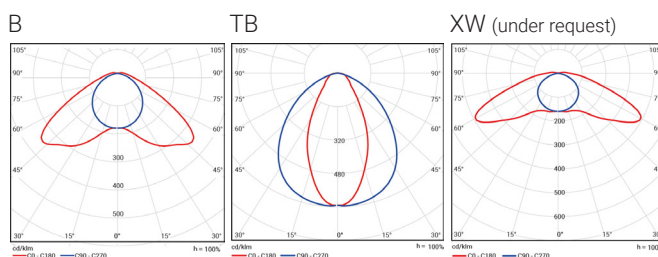
Lifetime	L80 100,000 hours at 35°C
Guarantee	5 years
Fire protection	Flammability (UL94): V2 Glow wire test (EN 60695-2-11): 650°



Photometrical characteristics

SDCM	< 3
------	-----

- Ex II 3G Ex ec op is IIC T6 Gc
- Ex II 3D Ex tc op is IIC T85 Dc
- Ex II 2D Ex tb op is IIC T85 Db



STRONGEX | 1200

Description

FAMILY	TUBE	LENGTH (mm)	OPTICS	LUMINOUS FLUX (lm)	CRI	LIGHT COLOUR (K)	DRIVER	EXTERNAL CONNECTION	SENSOR
> STRONGEX	> -: clear + grey > OP: opal	> 1200	> B: double asymmetrical > TB: narrow	> 65: 6500 > 50: 5000 > 30: 3000 > 22: 2200 > 15: 1500 > 12: 1200	> 8: >80	> 40: 4000	> ET: non-dimmable > ETDD: DALI dimmable > ETDD CS: Casambi dimmable	> CG: ATEX cable gland + 1m external cable > PNCX: ATEX quick connector	> HFS: high frequency sensor

Special options under request

Ask our Sales Team for more details	> 300 > 600	> XW: extensive	From 1200 to 6500	> 9: >90	> 30: 3000 > 50: 5000 > 65: 6500
-------------------------------------	----------------	-----------------	-------------------	----------	--

Operational data

CG: with ATEX cable gland

Description	Order number	Luminous flux (lm)	Power (W)	Efficiency (lm/W)	Colour temperature (K)	CRI	Temperature range
STRONGEX2 1200 B 65-840 ET CG	10225185	6500	43	150	4000	> 80	-35°C - +55°C
STRONGEX2 1200 B 65-840 ETDD CG	10225187	6500	43	150	4000	> 80	-35°C - +55°C
STRONGEX2 1200 TB 65-840 ET CG	10225193	6500	43	150	4000	> 80	-35°C - +55°C
STRONGEX2 1200 TB 65-840 ETDD CG	10225195	6500	43	150	4000	> 80	-35°C - +55°C
STRONGEX2 1200 B 65-840 ETDD CS CG	10225398	6500	43	150	4000	> 80	-35°C - +32°C
STRONGEX2 1200 B 65-840 ETDD CS CG HFS	10225399	6500	43	150	4000	> 80	-35°C - +32°C
STRONGEX2 1200 TB 65-840 ETDD CS CG	10225402	6500	43	150	4000	> 80	-35°C - +32°C
STRONGEX2 1200 TB 65-840 ETDD CS CG HFS	10225403	6500	43	150	4000	> 80	-35°C - +32°C
STRONGEX2 OP 1200 50-840 ET CG	10225184	5000	43	150	4000	> 80	-35°C - +55°C
STRONGEX2 OP 1200 50-840 ETDD CG	10225186	5000	43	150	4000	> 80	-35°C - +55°C
STRONGEX2 OP 1200 50-840 ETDD CS CG	10225192	5000	43	150	4000	> 80	-35°C - +32°C
STRONGEX2 OP 1200 50-840 ETDD CS CG HFS	10225392	5000	43	150	4000	> 80	-35°C - +32°C

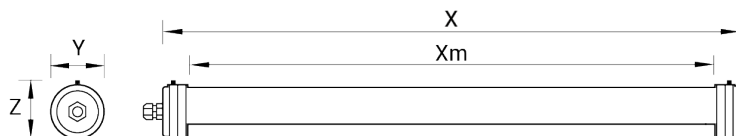
PNCX: with external quick connector

Description	Order number	Luminous flux (lm)	Power (W)	Efficiency (lm/W)	Colour temperature (K)	CRI	Temperature range
STRONGEX2 1200 B 65-840 ET PNCX	10225390	6500	43	150	4000	> 80	-20°C - +55°C
STRONGEX2 1200 B 65-840 ETDD PNCX	10225391	6500	43	150	4000	> 80	-20°C - +55°C
STRONGEX2 1200 TB 65-840 ET PNCX	10225394	6500	43	150	4000	> 80	-20°C - +55°C
STRONGEX2 1200 TB 65-840 ETDD PNCX	10225395	6500	43	150	4000	> 80	-20°C - +55°C
STRONGEX2 1200 B 65-840 ETDD CS PNCX	10225406	6500	43	150	4000	> 80	-20°C - +32°C
STRONGEX2 1200 B 65-840 ETDD CS PNCX HFS	10225407	6500	43	150	4000	> 80	-20°C - +32°C
STRONGEX2 1200 TB 65-840 ETDD CS PNCX	10225410	6500	43	150	4000	> 80	-20°C - +32°C
STRONGEX2 1200 TB 65-840 ETDD CS PNCX HF	10225411	6500	43	150	4000	> 80	-20°C - +32°C
STRONGEX2 OP 1200 50-840 ET PNCX	10225188	5000	43	150	4000	> 80	-20°C - +55°C
STRONGEX2 OP 1200 50-840 ETDD PNCX	10225189	5000	43	150	4000	> 80	-20°C - +55°C
STRONGEX2 OP 1200 50-840 ETDD CS PNCX	10225194	5000	43	150	4000	> 80	-20°C - +32°C
STRONGEX2 OP 1200 50-840 ETDD CS PNCX HF	10225393	5000	43	150	4000	> 80	-20°C - +32°C

Dimensions and logistics

Description	X	Xm	Y	Z					
	mm	mm	mm	mm	L x W x H mm	Pcs./ Box	Box	Groupage Pcs./Euro pallet	Double pallet Pcs./Euro pallet
STRONGEX 1200...	1340	1205	112	112	1350 x 112 x 112	1	4,6	54	42 + 42

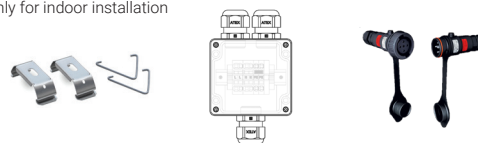
Please check with our Back Office to confirm logistic data



Accessories

10174901	Accessories bag STRONGER G2 SCRW
10225340	Junction box 122x120x90mm
10230425	Junction box 80x75x75mm
10235494	Connector bag PNCX

Only for indoor installation



10174901 10225340 / 10230425 10235494